



Nicole Sibi Immobilier

☎ 04 68 80 30 62

✉ sibi.nicole@orange.fr

www.nicolesibimmobilier.com

€ 242 000

Buying house

Surface : 130 m²

Surface of the living : 36 m²

Surface of the land : 190 m²

Exposition : Sud nord

View : Montagne

Hot water : Electrique

Inner condition : a refresh

External condition : good

Couverture : tiles

Amenities :

fireplace, Laundry room, calm

3 bedroom

2 terraces

1 bathroom

2 WC

1 garage

1 cellar

Energy class (dpe) : D

**Emission of greenhouse gases
(ges) : C**

Fees and charges :

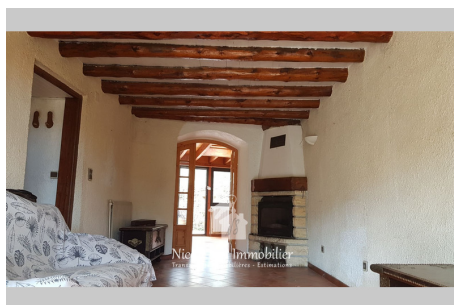
242 000 € fees included

11/12/2024 - Prix T.T.C



House Camélas

In the heart of the Aspres, this charming 130 m² stone house will seduce you with its unique character and its breathtaking view of the surrounding hills. It offers a warm living environment with its large sunny terrace and an intimate courtyard ideal for relaxation. The living room with fireplace insert extends into a veranda. The bright mezzanine brings a touch of originality to the whole allowing the creation of an additional bedroom. The garage and the cellar complete this practical and functional property. A true haven of peace, ideal for those in search of tranquility and authenticity in a privileged natural setting. Ref. : 891V417M - Mandat n°673



Nicole Sibi Immobilier - 32 Rue Principale, 66130 Corbère - Tél: 04.68.80.30.62

sibi.nicole@orange.fr - Port: 06.09.01.94.96

sibi.stephane@orange.fr - Port: 06.04.13.51.52

RCS 752 554 964 Code NAF 6831 Z - SIRET 752 554 964 00029 tribunal de Perpignan

Document non contractuel - Barème de prix disponible sur notre site internet